

2024

Granville  
Community Kitchen

# ANNUAL REPORT





# Content

|  |       |
|--|-------|
| 1. Who We Are                            | 1-3   |
| 2. Journey of the Good Food Ecologies    | 4-5   |
| 3. Milestones of 2024                    | 6-9   |
| - Learning Programme                     |       |
| - Granville Community Farm Hub Programme |       |
| 4. Community Building                    | 10-11 |
| 5. Good Food Box                         | 12    |
| 6. Growing                               | 13    |
| 7. Holding and Shifting Narratives       | 14-15 |
| 8. Finance                               | 16    |



WE ARE

# GRANVILLE COMMUNITY KITCHEN

An ethical, sustainable, culturally diverse community food hub, offering food-related services, activities, learning and training that is accessible, family-friendly and open to all. With the communities of South Kilburn at its centre, we place the most disaffected at the heart of our work, co-creating a local response to social issues whilst building strength and capacity and lifting voices to advocate for structural change.

WE ARE DOING



Growing



Community



Farm Hub



Good Food Box

Learning



OUR VISION

We work towards a world in which



Everyone has easy access to nutritious, sustainable, culturally appropriate food.



The GCK values of dignity, equity, justice and care inform every action.



Communities are interconnected and interdependent: working together, growing stronger, producing new possibilities and creating things which we couldn't create alone.



All communities thrive and are resilient from future shocks.



Our work is meaningful, our work-lives are balanced, and we always have time for joy, play, learning and celebration.

In 2022, in response to a rapidly changing society, the GCK team developed a strategic document to guide our work over the following two years.

We have developed our strategy across six key themes:

## AREAS WE ARE WORKING ON



### Building and Sustaining Community

- Organised 6 community trips attended by 20ish community members.
- Served 5200+ dinners in the community kitchen.
- 200 hours of impactful volunteer work were contributed by schools and the local community per week.



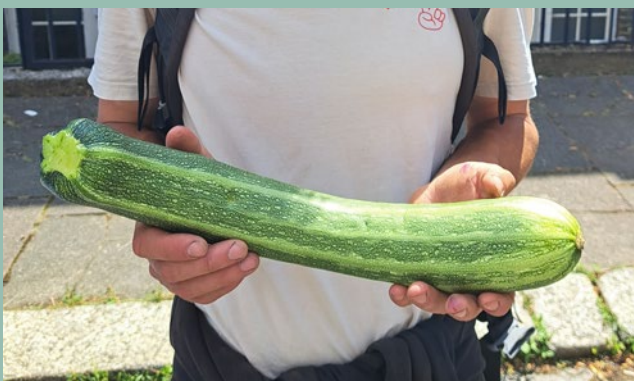
### Making Good Food Accessible to All

- Set up the GP GFB surgery connection.
- 14 different veg grown and harvested in our community garden, Granville Rec and the OK Club.
- 35 tons of food a year saved from landfill and given to community.



### Building and Shifting Power and Influence

- We attended and gave a speech at Belgian parliament, Future of Food Symposium, IPES-Food Conference...
- We participate in the film, 6 Inches of Soil. We are within the halls of mainstream policy
- making: Brent food strategy, Nyeleni Process, Parliamentary policy with CAWR...



### Creating Opportunities for Livelihoods in The Food System

- Became part of Community Business Trade of School for Social Enterprise.
- Produced a business plan for the Granville Community Farm Hub Programme.
- Found new places for ongoing community programs to move seamlessly, due to the deconstruction of the Granville and Carlton.





## Supporting Opportunities for Education and Learning

- Kids from The American School in London and the St Marylebone CE Bridge School volunteered for the GFB project.
- Opened, upgraded, maintained a new educational growing site—Granville Rec.
- Prepared for the Learning Programme 2025.



## Holding and Creating Alternative Stories and Narratives

- Held a Goodbye Granville Party to document community memories as a response to losing Granville.
- Celebrated GCK 10 years birthday with GCK friends.
- Worked actively on going back to the Granville.

## OUR TEAM



**Dee (She/her)**  
Co-founder



**Leslie (She/her)**  
Co-founder



**Lamis (She/her)**  
Project Coordinator

- Core Function Team
- Community Team
- Learning Team
- Good Food Box Team
- Farm Hub Team



**Sian (She/her)**  
Accounts Worker



**Beni (they/them)**  
Farm Hub Programme  
Developer & Grower



**Levi (he/him)**  
Good Food Box Organiser  
& Bookkeeper



**Riham (She/her)**  
Good Food Box  
Promoter



**Rob (he/him)**  
Learning Programme  
Coordinator



**Capri (She/her)**  
Community Meal  
Coordinator



**Jo (She/her)**  
Farm Hub Programme  
Coordinator



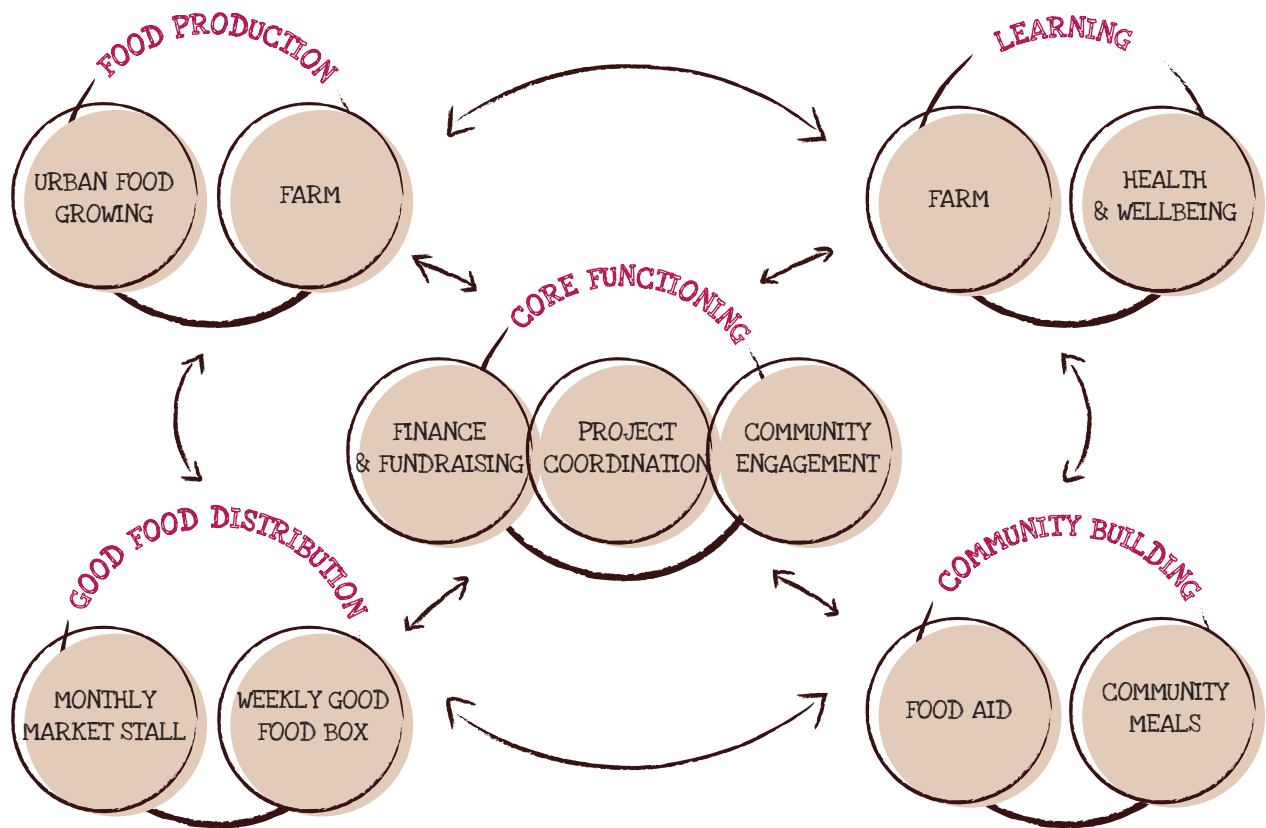
**Calum (he/him)**  
Farm Hub Programme  
Developer



## 2. Good Food Ecologies (GFE)

Granville Community Kitchen is reimagining our food system, co-creating a community of abundance, healing and resilience with eaters, farmers and food producers, chefs and food businesses, community organisations, academics and researchers. We call this vision of the future the Good Food Ecologies (GFE) model. This unique model integrates an urban community kitchen and food co-op with a peri-urban farm, ensuring the people of South Kilburn

have access to healthy, culturally appropriate food, education, livelihood opportunities, and connections to the natural world. With over a decade of experience in implementing this regenerative model, GCK has established impactful, food-focused community initiatives.



Over the past 10 years, GCK has been steadily exploring how the Good Food Ecologies model can serve as a guiding principle in building a more just and sustainable food system.



Started with  
Community Meals



Kept growing food in  
our Community Garden



○ 2018

GFE Initial Development Plan:

- Market Vegetable Stall
- Farm
- Community Supported Agriculture
- Community Bakery

Launched Good Food Box  
and Food Aid programmes



○ 2020

○ 2022

Ended our no borders Food Aid Service and provided emergency Food Aid instead to decrease reliance on temporary charitable food provision

Officially launched the Learning Programme and the Granville Community Farm Hub Programme

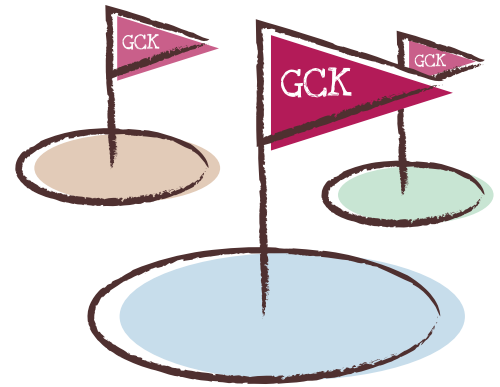
○ 2024





## 3. Milestones of 2024

In 2024, GCK received grants from the National Lottery and Esmée Fairbairn Foundation, which provided vital funding to accelerate the launch of our Learning Programme and Granville Community Farm Hub Programme. To ensure these programmes develop steadily, GCK engaged with a range of stakeholders, including local schools and farms, and expanded our core team and partnership network.



### Learning Programme



“



In progressing new learning programmes and activities, it felt important to develop these in dialogue with the local South Kilburn community as to reflect GCK' S community-centred approach. We learnt a lot through workshops and conversations as to what people were interested to learn, how sessions might best be structured, and what participants were aiming for in doing different learning activities.

-- Rob, Learning  
Programme Coordinator



The Learning Programme aims to reframe the relationship between people and the land, particularly for younger generations living in urban areas, and to provide accessible, people-centred educational pathways that build skills and confidence for livelihoods in the food system.

## HOW WE DEVELOPED IT

In 2024, GCK developed a financial plan for the Learning Programme and outlined the programme schedule in preparation for its official public launch in 2025.

○ 2022

Initial project ideas aligning with GCK strategy



Finished GCK Education: New Directions & Community Research

○ 2023

Community Class & Workshop practices



Conducted GCK Education Research

2024

Learning Programme Preparing



EARLY 2024

Developed a business plan



SECOND HALF 2024

Fundraised



LATE 2024

Planned the Learning Programme 2025



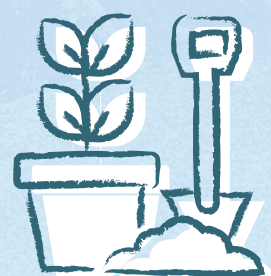
LATE 2024

Liaised with skilled practitioners and potential partners

○ 2025

Learning Programme 2025

9 learning programmes with 722 learning opportunities in food growing, food processing, cookery, and political agroecology





# Granville Community Farm Hub Programme

The Granville Community Farm Hub will function as both a productive agroecological farm, producing healthy and culturally diverse food for the community, whilst also being a community space, providing livelihood and learning opportunities and a place for people to connect with nature and each other.

The Farm Hub will be a peri-urban site, on the edge of London, primarily for the South Kilburn and local communities.



“



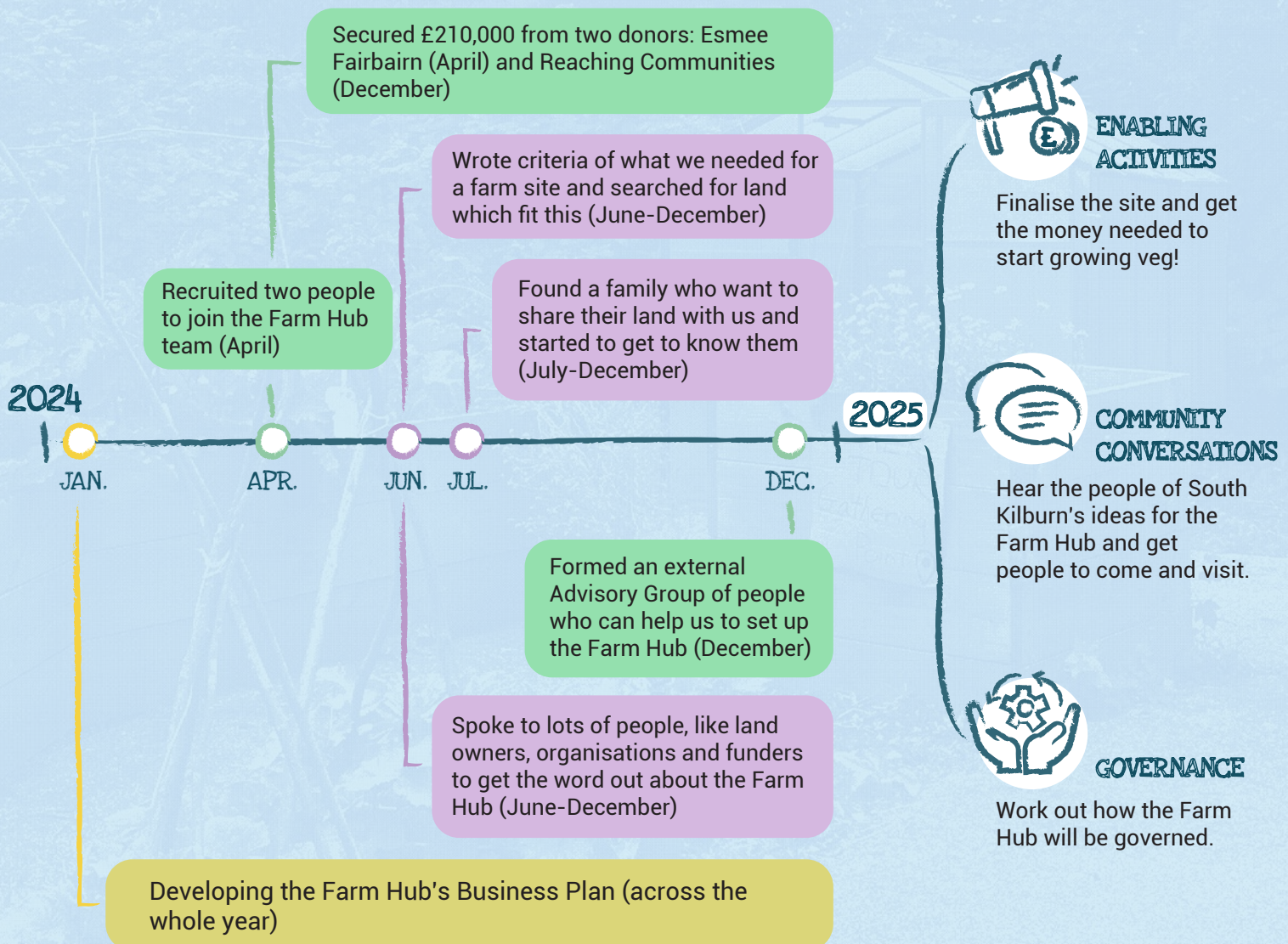
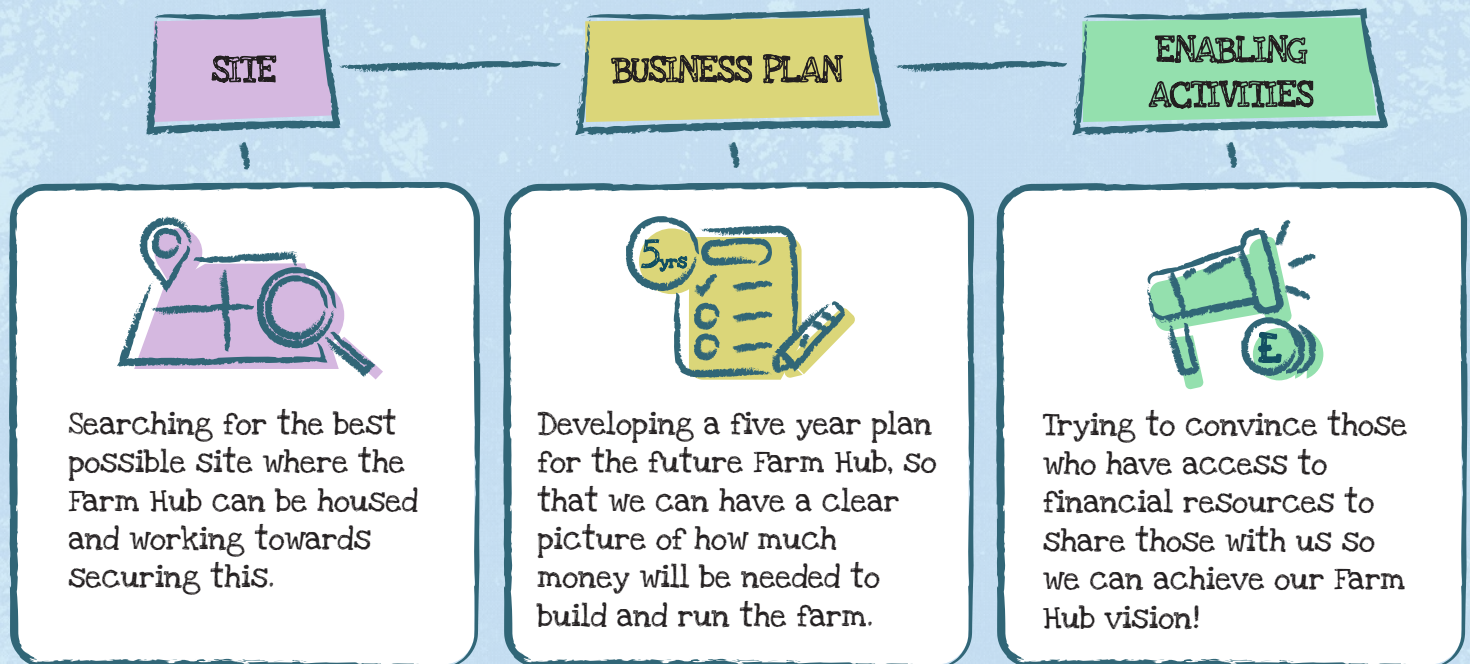
There has been a vision forming for the last 5 years of a natural space for South Kilburn residents to connect with - to learn new skills and practice old ones, to grow nutritious food and to strengthen community. We've been working for the last 12 months on turning this into a reality and we're really looking forward to shaping the farm hub into a place that is both transformative and meaningful.

-- Farm Hub  
Programme Team



## HOW WE DEVELOPED IT & PLANS FOR 2025

To make the Granville Community Farm Hub a reality, the Farm Hub team have been focussing on three key areas in 2024:





## 4. Community Building

Community building has always been the heart of GCK. We support the community through food related activities enabling the South Kilburn community to access nutritious, affordable and sustainable food. GCK reaches out to marginalised people in the community such as those with long term health conditions, learning disabled adults and those experiencing hunger and food insecurity. It builds food literacy, skills and confidence. This is achieved through cookery classes, volunteering opportunities, and organic food growing. GCK reduces isolation and strengthens community cohesion through regular group activities including community meals, film nights and community events.

Since the loss of access to our community centre—The Granville, GCK has been running activities across multiple temporary sites in South Kilburn. This ongoing displacement reflects both our long-term campaign to reclaim community space and the resilience of our community in the face of these challenges.



Moved to St Lukes  
and Salvation Army  
Kilburn (JAN.)

Moved stuff out  
The Granville (JAN.)

Organised a Thanks celebration  
for local resident, Peter (FEB.)

Started baking competitions  
among community meals  
volunteers (MAR.)





### COMMUNITY MEALS

150+



meals were served on average per week

### FOOD AID

90+



emergency food aid bags were delivered on average per week

### VOLUNTEERING



- Collaborated with the American school in London (ASL), organising a 5-week food aids volunteering session with kids from different grades
- 8 regular young volunteers helped with the Friday community meals

### COMMUNITY TRIPS



Organised 4 trips to Kew Gardens with around 20 community members and volunteers, and a trip to Southend with 45 participants.

### COMMUNITY CLASSES



Won a grant for Yoga and Women's only exercise to continue for 2 years



- Celebrated GCK's 10th Birthday (SEP.)

- Organised events in Granville Rec for South Kilburn CarniVale, as one of the main partners of the local festival (JUL.)

- Attended the Sharing Afternoon for a theatre project, The Great Regeneration Scheme, at Shoreditch Town Hall with community members (NOV.)





## 5. Good Food Box

Launched in 2020, the Good Food Box (GFB) is a weekly vegetable subscription scheme that supports the community in accessing culturally appropriate, agroecological, and certified organic food at an affordable price. As GCK's first practical step toward supporting local farmers and building a more localised food system, the scheme aligns closely with the Good Food Ecologies model.

In 2024, the GFB project focused on expanding its reach (families, local groups and schools) and growing organically despite the ongoing challenge of losing secure community space. Throughout the year, the packing operations were relocated three times—January, June, and December, and pick-up points were moved from The Granville to St Luke's Church and the Salvation Army Hall in January.



Packed 1934 Bags over the year  
- 337 African & Caribbean bags  
- 1,597 North European bags



Peak members at 57 for 3 weeks in May, averaging 51 to 53 throughout the year



Organised 6 workshops with Marylebone School



Attended around 20 events to share the GFB model

### snapshot of 2024





## 6. Growing

In spring 2024, we collaborated with PlayBuildPlay to co-design and build the Granville Rec with South Kilburn residents. Through conversations at community meals and consultations with staff from the Granville Family Wellbeing Centre and the Nursery, the project was co-designed and co-constructed with the local community. Together, we created a functional and playful garden featuring a greenhouse, purpose-specific growing beds, storage space, a shed, and a children's playground. We also welcomed two new gardeners to the team, who have run garden volunteering days twice a week.



### Snapshot of 2024





## 7. Holding and Shifting Narratives

2024 marks a special milestone for GCK – the 10th anniversary of our journey. Over the past decade, we began with community meals and samba nights, creating spaces for connection through hot meals and social gatherings. We provided food aid during the challenging period of COVID-19 and have continued to grow our team to innovatively practice our vision of Good Food Ecologies.

Throughout these ten years, we have been committed to holding and shifting narratives. Documenting and sharing GCK's journey, upholding and redefining community stories in the face of spatial displacement caused by urban renewal, and recasting marginalised voices. Our work remains grounded in celebrating and sustaining the multicultural spirit of the South Kilburn community.





## Snapshot of 2024

Land Justice

Attended Land Justice Fair



Organised wellbeing events at the community garden, Granville Rec as one of the main partners of the South Kilburn CarniVale

Started community engagement process of the Granville



Published Food Zine, 'From Seed To Plate'



Collaborating with The Great Regeneration Scheme, 10 SK residents attended the Sharing Afternoon at Shoreditch Town Hall

2019

GSK and South Kilburn community members visited Brent Civic Centre, attempting to save The Granville.

We started three ongoing programs, working towards building a more just, resilient and sustainable local food system.

- Weekly emergency Food Aid project
- Good Food Box (GFB) project, an organic, seasonal and locally sourced vegetable and fruit subscription service

- Started developing our Farming project, with Beni joining us to grow our Farm team



2020

2021



DOLORES VILA



BENI



MARIA



CHARLES

We created the project, Unsung Heroes of South Kilburn: People Place and Heritage. These portraits were drawn by Nur Hannah Wan.



2023

We started working in our new community garden, The Granville Rec, and harvested in the Autumn!

2024

We lost The Granville, and our programs were spread throughout South Kilburn, currently in five different locations.



2022

We attended Food Justice Parade protesting the right to food. We collaborated with the Care 4 Calis and In The Mix, hosting a space and cooking meals together from many diverse food heritages each week.



LEVI

SEETHA

GREY

ROB

SOPHIE

CAPRI

ALFIE

GEORGIA

SIAN

BENI

LAMIS

HANNAH

RIHAM

DECIBEL

JO

CALUM



# 8.

## Finance

Extract from (unaudited) Accounts,  
year ending 31.12.24

|                         |          |
|-------------------------|----------|
| Income                  | £199,533 |
| Funds b/f               | £60,116  |
| Expenditure             | £184,376 |
| Surplus for the year    | £15,157  |
| Total funds at 31.12.24 | £75,273  |

## Financial Success

- Continued quarterly management accounts
- Regular and frequent processing of financial data
- Some successful fundraising including Lottery funding from Reaching Communities England and Awards for All, and Esmée Fairbairn Foundation

## Our Collaborators

Better Food Shed • Brent Health Matters • Centre for Agroecology, Water & Resilience(CAWR) • City Harvest • Community Food Growers Network(CFGN) • Global Skills • GoodGym • Hampstead and Kilburn • Healing Justice London • Independent Food Aid Providers(IFAP) • Keith Anderson and the groups • Kew Gardens • Landworkers' Alliance(LWA) • Land Justice Fair • Lin Kam Art • Lonsdale Medical Centre(Lonsdale Road) • Nur • OK Club • Queen's Park Area Residents' Association(QPARA) • SEA • SEON • Springhill Cohousing Community • South Kilburn CarniVale • St Lukes Church Fernhead Road • Streetlinks • Stroud Community Agriculture • Sufra NW London • The American School in London • The Otherwise Club • The Salvation Army Kilburn • The St Marylebone CE Bridge School



## Our Funders







A big thanks to all of our funders, collaborators, individual donors, volunteers who supported us in 2024. As we reach the end of 2024, our 10th year, we close one chapter, but this is far from an ending. It is the dawn of the next 10 years, 20 years, and beyond—a future brimming with possibilities.





# THANK YOU!

If you want to support our vision,  
please donate.

With your help, we can create a just, resilient  
and sustainable world together.



## Get Involved

🖱 [www.granvillecommunitykitchen.org.uk](http://www.granvillecommunitykitchen.org.uk)

✉ [info@granvillecommunitykitchen.org.uk](mailto:info@granvillecommunitykitchen.org.uk)

📷 grancomkitchen  
gck\_goodfoodbox

Granville Community  
**KITCHEN**

Granville Community Kitchen is  
registered with the FCA as a  
Society for the Benefit of the  
Community. Number 7488